



DIVISION OF AQUA-CHEM, INC.

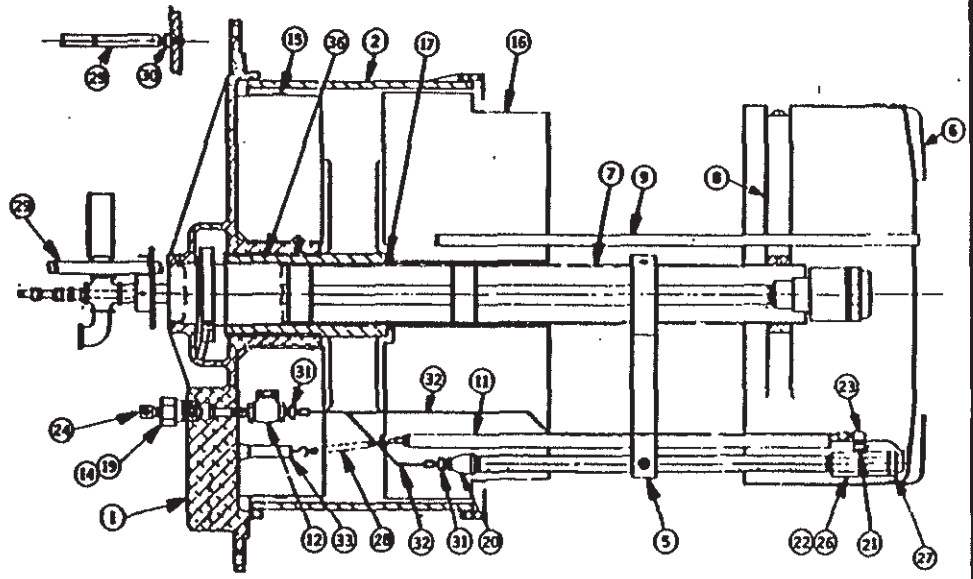
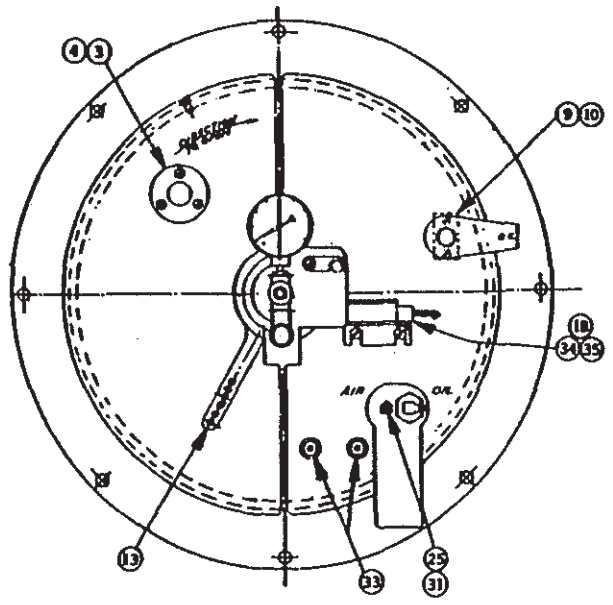
MILWAUKEE, WISCONSIN 53201  
**PARTS REFERENCE**

ITEM	REQ	PART NO.	DESCRIPTION
1	1	58-1057	BURNER BACKPLATE WITH BEARING
2	1	108-50	ROTARY DAMPER
3	1	851-77	MICA SIGHT HOLE - 1-1/2"
4	1	65-11	SIGHT HOLE RETAINER
5	1	8-902	ELECTRODE AND PILOT BRACKET
6	1	275-143	DIFFUSER
7	1	90-214	BURNER DRAWER TUBE
8	1	134-50	SPIDER
9	1	90-571	SCANNER TUBE ASSEMBLY
10	1	32-497	SCANNER TUBE GASKET
11	2	435-50	IGNITION ELECTRODE
12	1	940-528	BALL CHECK VALVE
13	1	2-43	DAMPER ARM
14	1	108-10	OIL ORIFICE BLOCK
15	1	22-133	FRONT STABILIZER
16	1	22-132	STABILIZER
17	1	73-41	SEAL RING
18	1	848-2	CONNECTOR
19	1	899-59	NOZZLE WITH STRAINER

ITEM	REQ	PART NO.	DESCRIPTION
20	1	847-718	REDUCER COUPLING
21	1	847-415	REDUCER BUSHING
22	1	277-23	NOZZLE BODY - PILOT
23	1	845-780	ELBOW - COMPRESSION
24	1	845-42	ELBOW - FLARED
26	1	845-428	ADAPTER FITTING
26	1	82-34	SWIRLER SPRING - PILOT
27	1	251-7	NOZZLE TIP & SWIRLER - PILOT
28	2	924-49	EXTENSION SPRING (SPECIFY LENGTH)
29	1	58-21	LOCKING PIN
30	1	889-38	NUT
31	1	845-781	ADAPTER FITTING
32	2	939-60	TUBING - 12" LG. (SPECIFY LENGTH)
33	2	94-179	FEED THRU INSULATOR
34	1	838-89	LIMIT SWITCH
35	1	8-710	LIMIT SWITCH BRACKET
36	1	807-329	BEARING
*	1	SEE TABLE	BURNER DRAWER ASSEMBLY

NOTES: 1.) FOR BURNER GUN AND PARTS SEE SECTION FT5.2.1  
 2.) BURNER DRAWER 429-329 IS OBSOLETE, SEE TABLE FOR REPLACEMENT.

ITEM	TABLE		
	CB400	CB500	CB600-800
*	429-996	429-509	429-916



DATE  
4/1/86

**BURNER DRAWER WITH  
 LIGHT OIL PILOT  
 CB400-800 HORSEPOWER**

REVISION NO. 0 SHEET 1 OF 4 REFERENCE NO. FT5.1.7

THIS INFORMATION IS CONFIDENTIAL AND IS NOT TO BE USED IN ANY WAY DETRIMENTAL TO THE COMPANY'S INTEREST.

# Cleaver-Brooks

DIVISION OF AQUA-CHEM, INC.

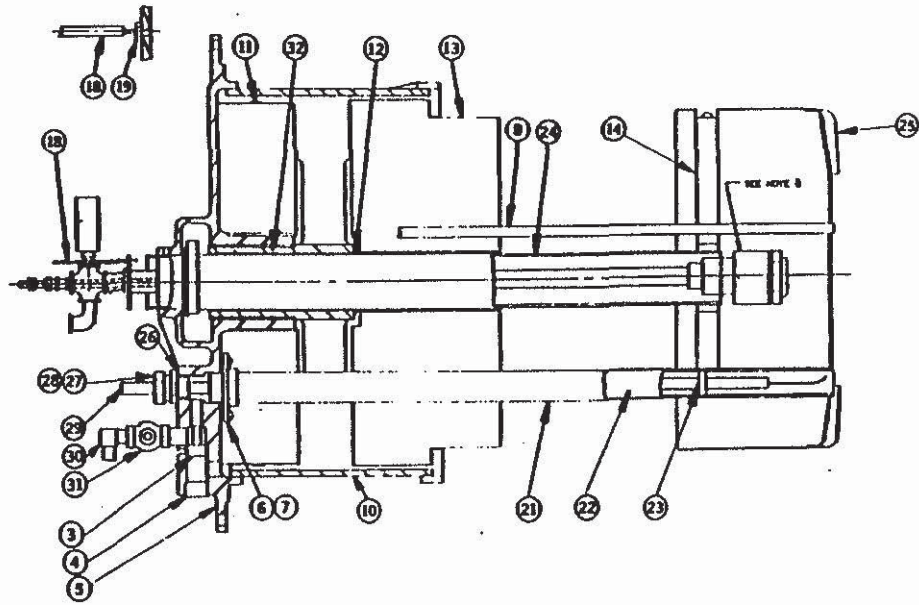
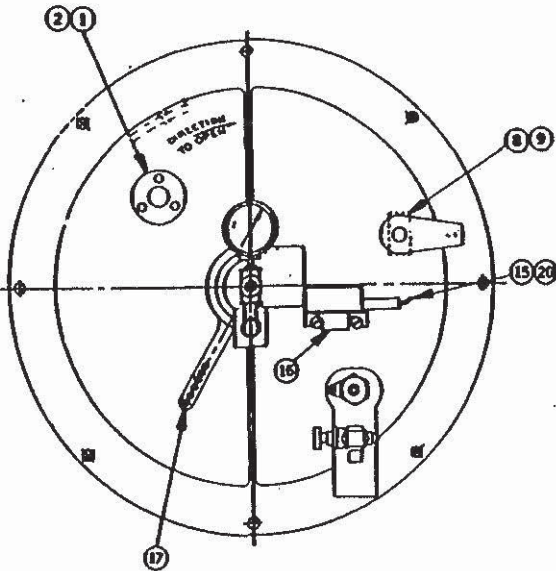
MILWAUKEE, WISCONSIN 53201

## PARTS REFERENCE

ITEM	REQ	PART NO.	DESCRIPTION	ITEM	REQ	PART NO.	DESCRIPTION
1	1	851-77	MICA SIGHT HOLE - 1-1/2"	18	1	58-21	LOCKING PIN
2	1	85-11	SIGHT HOLE RETAINER	19	1	869-36	NUT
3	1	48-98	VENTURI - ASPIRATOR	20	1	848-2	CONNECTOR
4	1	858-310	ACCESS PLUG	21	1	90-572	GAS PILOT PIPE
5	1	59-1043	BURNER BACKPLATE WITH BEARING	22	1	90-186	GAS PILOT ADAPTER SLEEVE
6	1	1-197	GAS PILOT ADAPTER FLANGE	23	1	134-53	ELECTRODE HOLDER
7	1	73-32	ADAPTER SEAL RING	24	1	90-214	BURNER DRAWER TUBE
8	1	90-571	SCANNER TUBE ASSEMBLY	25	1	275-143	DIFFUSER
9	1	32-497	SCANNER TUBE GASKET	26	1	853-1	O-RING (ELECTRODE GLAND SEAL)
10	1	108-50	ROTARY DAMPER	27	1	34-7	IGNITION ELECTRODE GLAND
11	1	22-133	FRONT STABILIZER	28	1	904-36	RUBBER GROMMET
12	1	73-41	SEAL RING	29	1	435-71	IGNITION ELECTRODE
13	1	22-132	STABILIZER	30	1	846-194	ELBOW - FLARED
14	1	134-50	SPIDER	31	1	825-30	GAS COCK
15	1	836-89	LIMIT SWITCH	32	1	807-329	BEARING
16	1	8-710	LIMIT SWITCH BRACKET	*	1	SEE TABLE	BURNER DRAWER ASSEMBLY
17	1	2-43	DAMPER ARM				

- NOTES: 1.) FOR BURNER GUN AND PARTS SEE SECTION FT5.2.1  
 2.) BURNER DRAWER 429-330 IS OBSOLETE, SEE TABLE FOR REPLACEMENT.

TABLE			
ITEM	CB400	CB500	CB600-800
*	429-995	429-510	429-917



DATE  
4/1/86

BURNER DRAWER WITH  
GAS PILOT

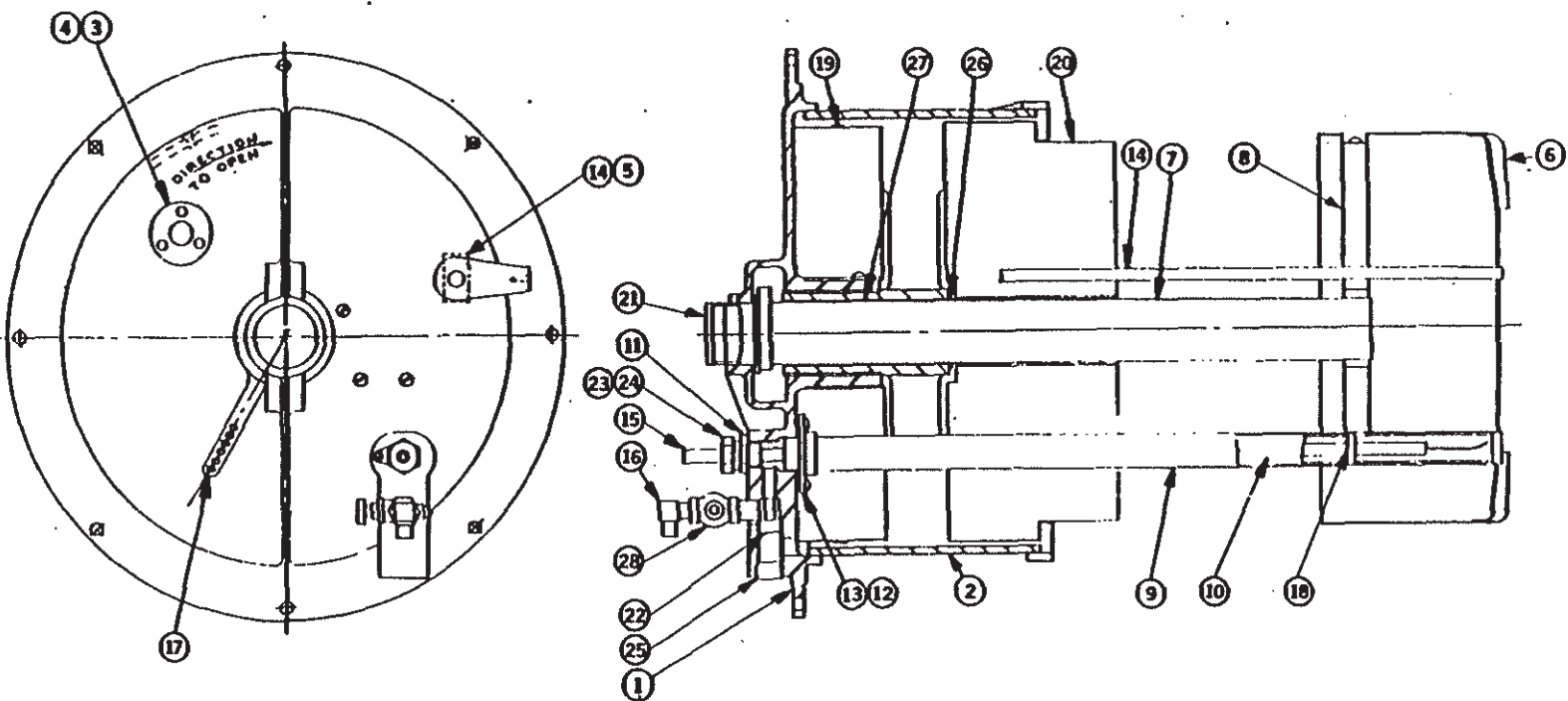
CB400-800 HORSEPOWER

REVISION NO. 0 SHEET 2 OF 4 REFERENCE NO. FT5.1.7

THIS INFORMATION IS CONFIDENTIAL AND IS NOT TO BE USED IN ANY WAY DETRIMENTAL TO THE COMPANY'S INTERESTS.

ITEM	REQ	PART NO.	DESCRIPTION	ITEM	REQ	PART NO.	DESCRIPTION
1	1	59-1043	BURNER BACKPLATE WITH BEARING	15	1	435-71	IGNITION ELECTRODE
2	1	108-60	ROTARY DAMPER	16	1	845-194	ELBOW - FLARED
3	1	851-77	MICA SIGHT HOLE - 1-1/2"	17	1	2-43	DAMPER ARM
4	1	65-11	SIGHT HOLE RETAINER	18	1	134-63	ELECTRODE HOLDER
5	1	32-497	SCANNER TUBE GASKET	19	1	22-133	FRONT STABILIZER
6	1	275-143	DIFFUSER	20	1	22-132	STABILIZER
7	1	90-214	BURNER DRAWER TUBE	21	1	158-48	GUN PLUG
8	1	134-50	SPIDER	22	1	48-98	VENTURI - ASPIRATOR
9	1	90-672	GAS PILOT PIPE	23	1	34-7	IGNITION ELECTRODE GLAND
10	1	90-188	GAS PILOT ADAPTER SLEEVE	24	1	904-36	RUBBER GROMMET
11	1	853-1	O-RING (ELECTRODE GLAND SEAL)	25	1	858-310	ACCESS PLUG
12	1	1-197	GAS PILOT ADAPTER FLANGE	26	1	73-41	SEAL RING
13	1	73-32	ADAPTER SEAL RING	27	1	807-329	BEARING
14	1	90-571	SCANNER TUBE ASSEMBLY			429-508	GAS BURNER DRAWER ASSEMBLY

NOTES: 1.) BURNER DRAWER 429-328 IS OBSOLETE AND REPLACED WITH BURNER DRAWER 429-508.



**Cleaver Brooks**  
 DIVISION OF AQUA-CHEM, INC.  
 MILWAUKEE, WISCONSIN 53201  
**PARTS REFERENCE**

DATE  
4/1/86

**GAS BURNER DRAWER**  
**CB400-800 HORSEPOWER**

REVISION NO. 0  
 SHEET NO. 3 OF 4  
 REFERENCE NO. FT5.1.7

THIS INFORMATION IS CONFIDENTIAL AND IS NOT TO BE USED IN ANY WAY DETRIMENTAL TO THE COMPANY'S INTERESTS.

# Cleaver-Brooks

DIVISION OF AQUA-CHEM, INC.

## PARTS REFERENCE

MILWAUKEE, WISCONSIN 53201

BURNER DRAWER WITH

DUAL PILOT

CB400-800 HORSEPOWER

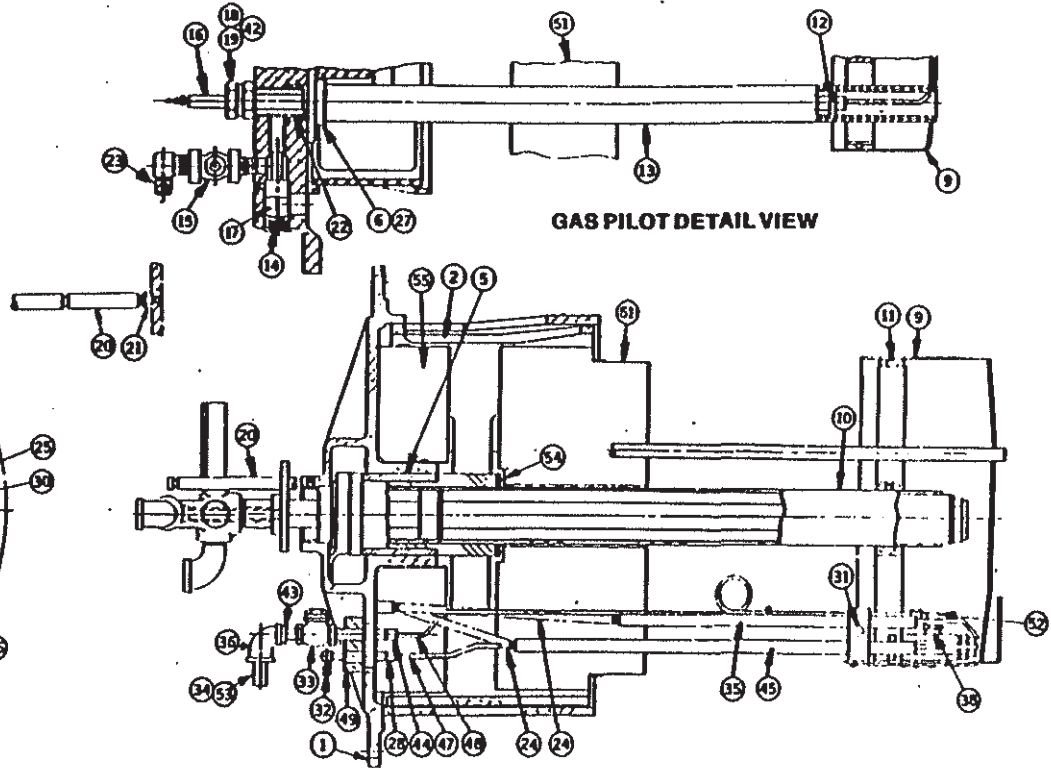
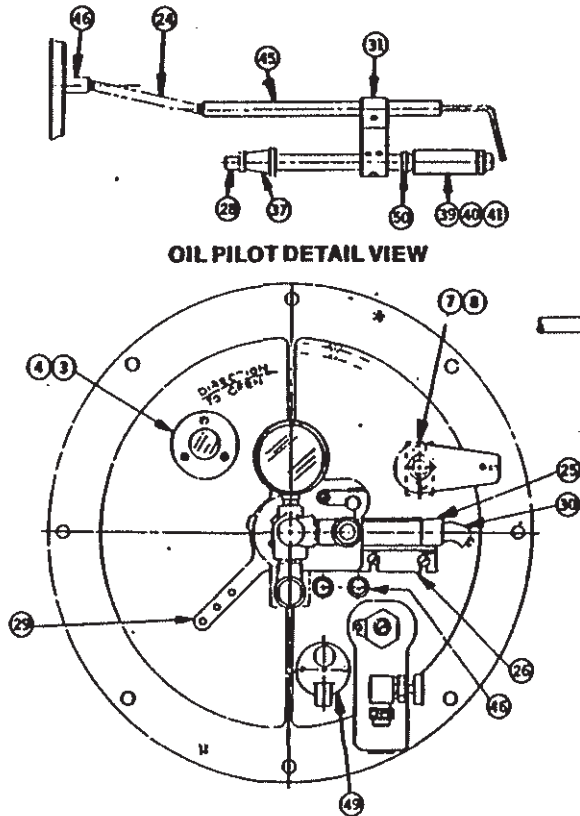
DATE  
4/1/86

REVISION NO. 0  
SHEET NO. 4 OF 4  
REFERENCE NO. FTS.1.7

ITEM	REQ	PART NO.	DESCRIPTION	ITEM	REQ	PART NO.	DESCRIPTION	ITEM	REQ	PART NO.	DESCRIPTION
1	1	826-2926	BURNER BACKPLATE WITH BEARINGS	20	1	66-21	LOCKING PIN	39	1	277-23	NOZZLE BODY - PILOT
2	1	108-60	ROTARY DAMPER	21	1	869-36	NUT	40	1	82-34	SWIRLER SPRING - PILOT
3	1	851-77	MICA SIGHT HOLE - 1-1/2"	22	1	90-186	ADAPTER TUBE	41	1	251-12	NOZZLE TIP & SWIRLER - PILOT
4	1	65-11	SIGHT HOLE RETAINER	23	1	845-313	ELBOW - FLARED	42	1	904-36	RUBBER GROMMET
5	1	807-329	BEARING	24	2	924-49	EXTENSION SPRING (SPECIFY LG.)	43	1	847-416	REDUCER BUSHING
6	1	1-197	GAS PILOT ADAPTER FLANGE	25	1	836-89	LIMIT SWITCH	44	1	845-329	CONNECTOR - 1/8"
7	1	80-571	SCANNER TUBE ASSEMBLY	26	1	8-710	LIMIT SWITCH BRACKET	45	1	435-50	IGNITION ELECTRODE - OIL
8	1	32-497	SCANNER TUBE GASKET	27	1	73-32	ADAPTER SEAL RING	46	2	94-179	FEED THRU INSULATOR
9	1	275-235	DIFFUSER	28	2	845-486	CONNECTOR - 1/4"	47	1	939-25	TUBING 17" LG. (SPECIFY LG.)
10	1	90-214	BURNER DRAWER TUBE	29	1	2-43	DAMPER ARM	48	1	939-60	TUBING 28" LG. (SPECIFY LG.)
11	1	134-50	SPIDER	30	1	848-2	CONNECTOR	49	1	106-64	OIL TERMINAL BLOCK
12	1	134-53	ELECTRODE HOLDER	31	1	8-2581	ELECTRODE BRACKET	50	1	847-417	REDUCER BUSHING
13	1	90-572	GAS PILOT PIPE	32	1	845-42	ELBOW - 1/4" x 1/8"	51	1	22-132	STABILIZER
14	1	868-310	ACCESS PLUG	33	1	940-526	BALL CHECK VALVE	52	1	845-306	ELBOW - 1/8"
15	1	825-30	GAS COCK	34	1	106-10	OIL ORIFICE BLOCK	53	1	899-59	NOZZLE WITH STRAINER
16	1	435-71	IGNITION ELECTRODE - GAS	35	1	435-81	IGNITION ELECTRODE - OIL	54	1	73-41	SEAL RING
17	1	48-98	VENTURI - ASPIRATOR	36	1	847-545	REDUCER ELBOW	55	1	22-133	FRONT STABILIZER
18	1	34-7	IGNITION ELECTRODE GLAND	37	1	847-525	REDUCER COUPLING	*	1	SEE TABLE	BURNER DRAWER ASSEMBLY
19	1	853-1	O-RING	38	1	847-415	REDUCER BUSHING				

NOTES: 1.) FOR BURNER GUN AND PARTS SEE SECTION FT6.2.1

ITEM	TABLE		
	CB400	CB500	CB600-800
*	429-1048	429-1049	429-1050



THIS INFORMATION IS CONFIDENTIAL AND IS NOT TO BE USED IN ANY WAY DETRIMENTAL TO THE COMPANY'S INTERESTS.