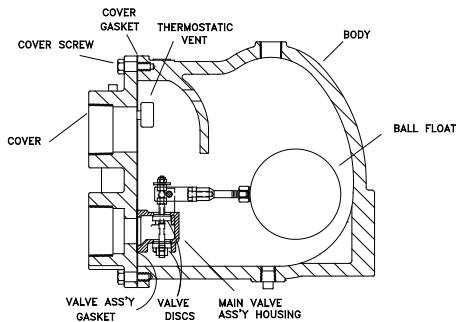


## **TROUBLE SHOOTING**

PROBLEM	CAUSE	ACTION
Trap does not discharge.	Damaged float. Operating pressure too high.	Replace float. Install trap suitable for operating pressure.
Trap does not close.	Dirt lodged on valve disc or thermostat seat area. Worn out internals; damaged thermostat.	Clean trap; replace thermostat; install strainer. Replace internals or thermostat; be certain to match the model no. and pressure.



### **Ordering Spare Parts**

Specify the description of the part.  
Indicate the Model Number, Size and Operating Pressure, which are shown on the name plate.

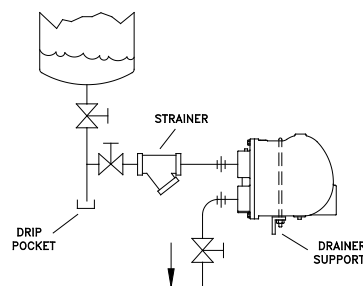
Typical Specification: Cover & Gasket for 2"  
FTE-20 Steam Trap                      2217700 Rev A  
C.R.-3794 2/4/16

3

5

## **INSTALLATION (SERIES FTE FLOAT & THERMOSTATIC STEAM TRAP)**

- Before installing the trap, blow out piping thoroughly to remove loose scale and dirt. Use pipe dope or teflon tape sparingly when attaching the trap to the pipe. Observe the pressure limitation shown on the trap label.
- Install the trap below the equipment being drained in a location easily accessible for maintenance and inspection. Be certain that the flow arrow on the trap cover points in the proper direction.
- Install a drip pocket to keep dirt away from the trap.
- Discharge piping should be amply sized to avoid excessive back pressures.
- To provide for easy maintenance and service, install a block valve on each side of the trap and install a strainer ahead of the inlet connection.



TYPICAL INSTALLATION

- All valves should be full ported to achieve the rated capacity of the trap.
- If the discharge piping is to be elevated, be certain that the available differential pressure is adequate to permit proper drainage. Remember, two feet of lift equals approximately one psi.

For more detailed installation instruction, see full service manual online at [watsonmcdaniel.com](http://watsonmcdaniel.com) or call the factory at 610-495-5131.